

look for



Every Drop Counts – Maximizing Your Agency’s Water Savings with WaterSense Tools and Resources

Tara O’Hare
U.S. EPA
WaterSense

May 17, 2018

WaterSense Can Help

look for



WaterSense is a voluntary program launched by EPA in 2006 that provides a simple way to identify water-efficient:

- Products
- Programs
- Practices
- Homes

Products are independently certified for water efficiency and performance





The WaterSense Label



Flushing Urinals



Lavatory Faucets



Irrigation Controllers



Pre-Rinse Spray Valves



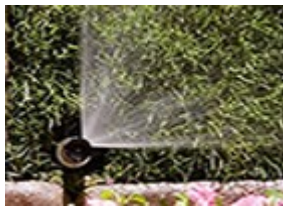
**28,000 +
Labeled
Product
Models**



Showerheads



Tank & Flushometer Valve Toilets



Spray Sprinkler Bodies

**Search tool at
epa.gov/watersense**

Water factors included in many ENERGY STAR certified products

Specification Update

Spray Sprinkler Bodies

- WaterSense labeled spray sprinkler bodies with integral pressure regulation provide a constant flow at the sprinkler nozzle for a uniform distribution of water spray and coverage
- First products have been labeled – now available in the product listing.
<https://www.epa.gov/watersense/spray-sprinkler-bodies>

Soil Moisture Sensors

- Still conducting research and collecting data from NOI
- WaterSense released a paper to discuss the progress, results, and further testing needs - see Status at <https://www.epa.gov/watersense/soil-moisture-based-control-technologies>

Homes 2.0 – updating and revising the specification for New Homes

- NOI released on 2/15/18
- Presentation and Summary of Public Meeting on website
- We are still accepting written comments

<https://www.epa.gov/watersense/homes-specification#HomeNOI>

2018 Monthly Outreach Themes

January

Resolve to Save Water in 2018

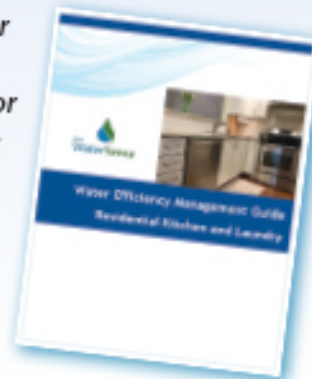
Pledge to use your WaterSense each month to save water all year!



February

Live, Save, Love

Love saving water and money in your apartment or condo? Use these guides for ideas.



March

Fix a Leak Week

Find and fix water-wasting drips this Fix a Leak Week; Spanish materials are available too!



Twitter Party: March 19, 2018

#FixALeak Week March 19-25, 2018

#WorldWaterDay March 22, 2018

April

Plant a Water-Smart Landscape

Make your green thumb even greener with a water-smart landscape.

#EarthDay
April 22, 2018



May

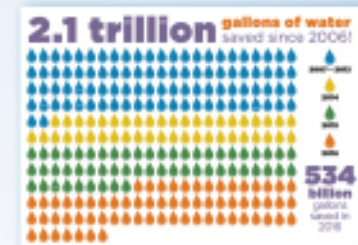
Sprinkler Spruce-Up

A certified irrigation pro can help you spring into action to save water outdoors.



June

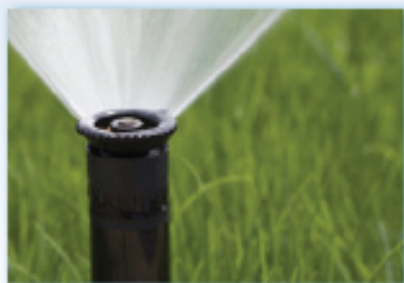
WaterSense Savings Numbers



WaterSense has helped consumers save trillions of gallons of water, plus energy and money!

July

A Better Body for Your System



Install WaterSense labeled spray sprinkler bodies to curb outdoor water waste.

August

Teach WaterSense to Kids

Download WaterSense resources for educators to help quench students' thirst for knowledge.

#WorldWaterWeek
August 26-31, 2018



September

Your Better Bathroom

Get your style—and more savings—when you remodel with WaterSense in mind.



October

2018 Partners of the Year

WaterSense partners champion water conservation, and you save!

Partners of the Year
Announced:
October 4, 2018

Energy Efficiency Day:
October 5, 2018
#EEDay2018



November

Give Thanks for WaterSense



WaterSense labeled fixtures in the guest bathroom save water when you have a full house.

#WorldToiletDay
November 19, 2018

December

'Tis the Season for Water Savings



Get in the water-saving spirit as you prepare for your holiday festivities.

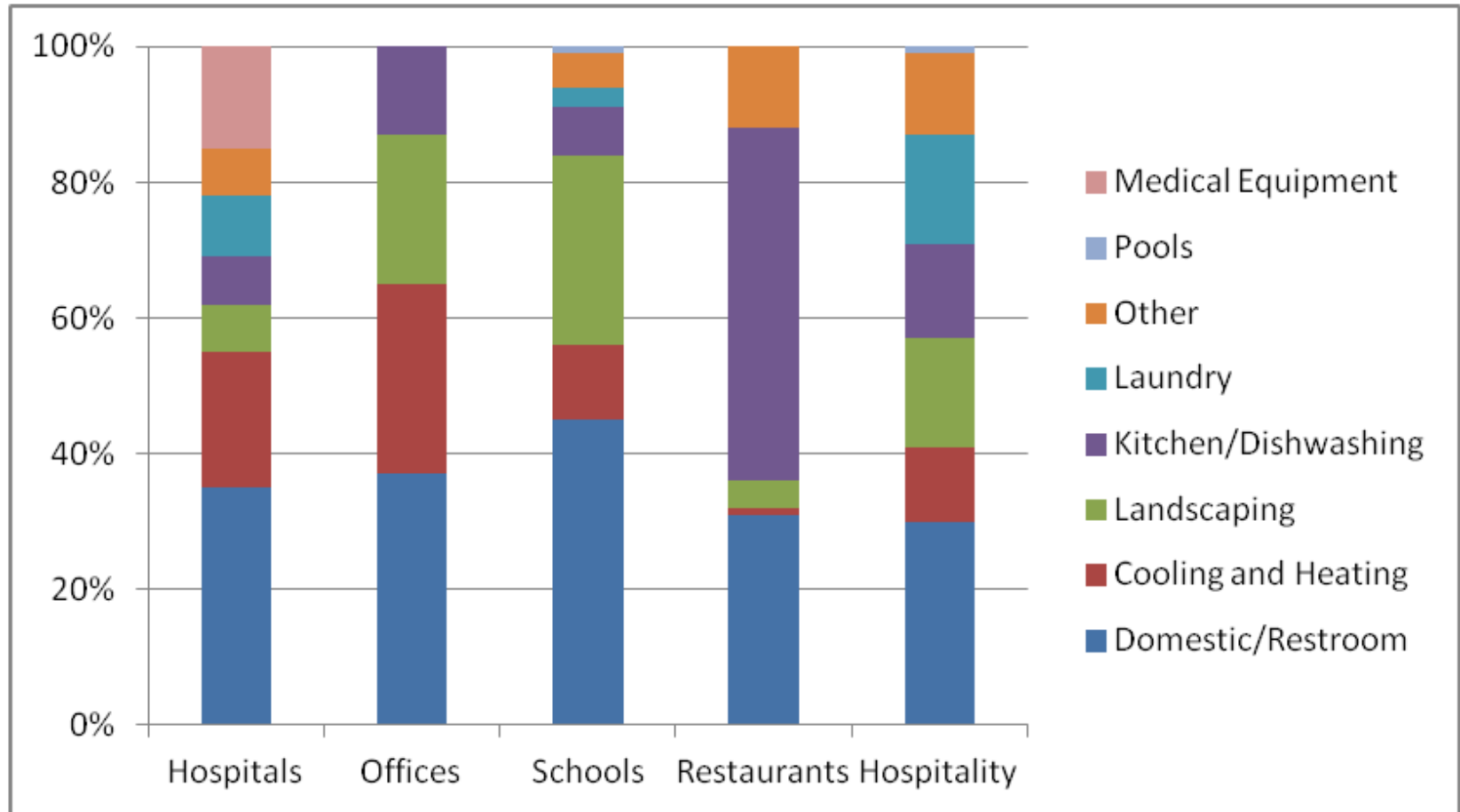
WaterSense Resources

- Water use information by facility type
- Best management practices
- Water-saving tips
- Assessment tools
- Worksheets and checklists
- Live and recorded training webinars
- Case studies and more!



www.epa.gov/watersense/tools

Water Use Profiles of Commercial Facilities



Tools for Getting Started

WaterSense Simple Water Assessment Checklist

Writable PDF to help quickly identify and target potential projects and best management practices

Sample Worksheets in Appendix B of *WaterSense at Work*

Building Water Survey, List of Water Meters, Water Consumption History; Equipment and Water Use Inventory

WaterSense Commercial Facility Leaks Checklist

PDF checklist to help quickly identify leaks and potential water waste



NEW

<https://www.epa.gov/watersense/tools>

Simple Water Assessment Checklist

Water-efficient Project or Practice	Section of <i>WaterSense at Work</i> ¹	Evaluate ✓	Implement ✓	Done ✓
10. Educate employees to turn off equipment including all continuous flow equipment, between uses; use automatic shut-off valves where applicable.	—			
11. Educate employees to use “dry” cleaning methods to avoid washing down equipment or areas with a water hose or mop; sweep or mop instead of spray washing with water.	—			
12. Test water pressure regularly on each floor of the facility to ensure it is within optimal range for fixture and equipment performance; use pressure regulating valves to correct any issues (i.e., optimal pressure is between 20 and 80 psi for most fixtures).	—			
Sanitary Fixtures and Equipment				
13. Regularly check all fixtures and valves for scaling and clean as needed.	3.2 - 3.5			
14. Test and calibrate all automatic- and sensor-flushing devices regularly to prevent double/phantom flushes.	3.2 - 3.3			
15. Check tank-type toilets for leaks, broken flappers, and other parts failures regularly.	3.2			
16. Display instructional signage with all dual-flush devices to ensure proper use.	3.2			
17. Replace old tank-type and flushometer-valve toilets with WaterSense labeled models, which flush at 1.28 gpf or less.	3.2			

Commercial Water Leaks Checklist


- Helps direct your search to major culprits of water waste
- Points you to dig deeper using BMPs and assessment resources

Checklist for Spotting Water Waste

Here are some of the places leaks may be hiding in your facility. Some leaks require a simple fix like tightening a loose connection, but other equipment malfunctions may require a licensed plumber or facility maintenance professional. Take a quick inventory of potential water waste in your facility:

Throughout the facility:	In the restroom:
<ul style="list-style-type: none"> <input type="checkbox"/> Check for pooling water, rust, or other signs of leakage under pipe connections and near floor drains. Look for signs of moisture or mold on your walls, ceilings, or floors. <input type="checkbox"/> Routinely check equipment cooling water lines for leaks and corrosion. <input type="checkbox"/> Inspect shutoff valves and sensors to ensure they stop continuously running water. <input type="checkbox"/> Encourage employees to report leaks and broken/loose parts. 	<ul style="list-style-type: none"> <input type="checkbox"/> Automatic sensors: Check and adjust sensors regularly to avoid double flushing or continuously running water. <input type="checkbox"/> Toilets and Urinals: Listen for running water and time the flush cycle. Regularly inspect and replace worn diaphragm or piston valves. Test tank-type toilets for worn flappers and other leaks with food coloring. <input type="checkbox"/> Faucets: Check for drips and verify that faucet aerators are still properly installed. <input type="checkbox"/> Showerheads: Look for drips or stray sprays, signs of scale buildup or other malfunctions restricting flow.
In the mechanical spaces:	Outdoors:
<ul style="list-style-type: none"> <input type="checkbox"/> Equipment with single-pass cooling: Check system specifications to use the minimum water flow rate required for cooling. Regularly check solenoid valves to make sure water is only flowing when needed. <input type="checkbox"/> Boiler and steam systems: Regularly check steam traps and steam and hot water lines for leaks. <input type="checkbox"/> Cooling towers: Read the conductivity meter and the make-up and blowdown flow meters regularly and log readings. Check the make-up and blowdown valves to make sure they cut off the flow of water cleanly. 	<ul style="list-style-type: none"> <input type="checkbox"/> Visually inspect the landscape for water pooling or puddling to prevent damage to hardscapes and overwatering plants. <input type="checkbox"/> Irrigation systems: Repair broken sprinkler heads and nozzles spraying in the wrong direction. Consult an irrigation auditor certified by a WaterSense labeled program to improve system efficiency. <input type="checkbox"/> Pools and Spas: Check water levels. A loss of more than 2" per week in the water level may mean a leak.
In the kitchen:	
<ul style="list-style-type: none"> <input type="checkbox"/> All equipment: Shut down or use standby mode for all continuous flow equipment between uses. Inspect shutoff valves to ensure they are working properly. <input type="checkbox"/> Pre-rinse spray valves: Clean openings as needed for smooth spray. Train employees to use always-on clamps only when necessary. <input type="checkbox"/> Dishwashers: Manual fill valves should close completely after the wash tank is full. Inspect and repair valves and rinse nozzles. <input type="checkbox"/> Steam equipment: Inspect and replace gaskets and tighten hinges on doors to retain heat or steam. <input type="checkbox"/> Food disposal systems: Turn off water to disposals during idle periods. Train users to manually scrape as much food waste as possible first. 	<p>Find more information about water-efficient best practices, tools, and case studies on the WaterSense website http://www.epa.gov/watersense/commercial-buildings</p> <p>Remember to look for the WaterSense label when purchasing plumbing products. WaterSense labeled products are independently certified to use at least 20 percent less water and perform as well or better than standard models.</p> <p>Fixing leaks at your workplace is important, but so is fixing leaks in your household. For more information on fixing leaks wherever they are, visit http://www.epa.gov/watersense/fix-leak-week</p>

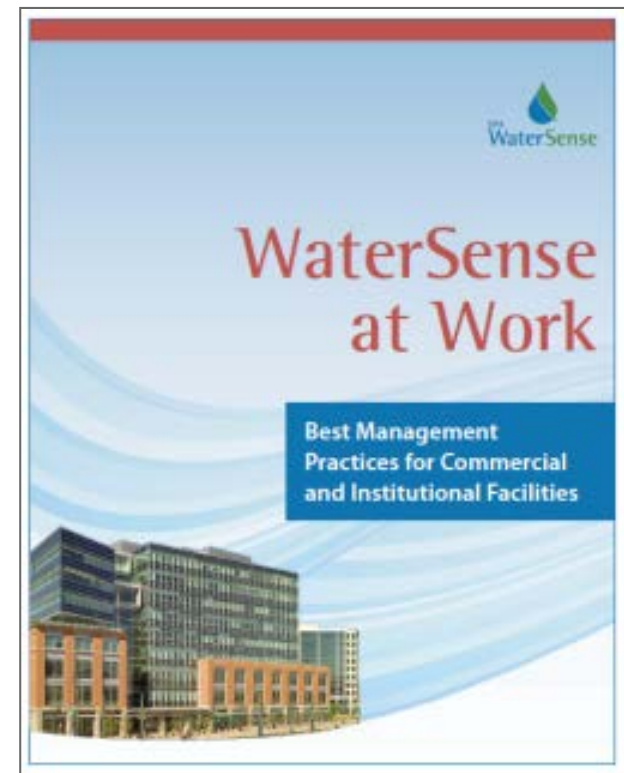
epa.gov/watersense



Best Management Practices

WaterSense at Work is an online guide facilities can use to manage water use:

- Water management planning
- Water use monitoring and education
- Sanitary fixtures and equipment
- Commercial kitchen equipment
- Outdoor water use
- Mechanical systems
- Laboratory and medical equipment
- Onsite alternative sources of water



EPA's 1-100 Water Score for Multifamily Buildings

look for



Score is calculated with a water use intensity metric

- Based on whole building water use intensity (total water use/divided by sq ft of indoor space)
 - Takes both indoor and outdoor water use into account
 - Many existing Portfolio Manager users only need to add irrigated area to get a score!
- Normalized for weather and operating characteristics (unit density, irrigated area)

No EPA certification or building label based on the Water Score

Available for existing multifamily buildings with 20 or more units



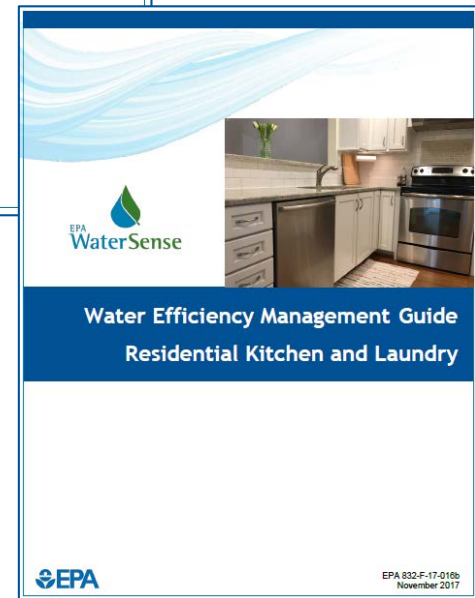
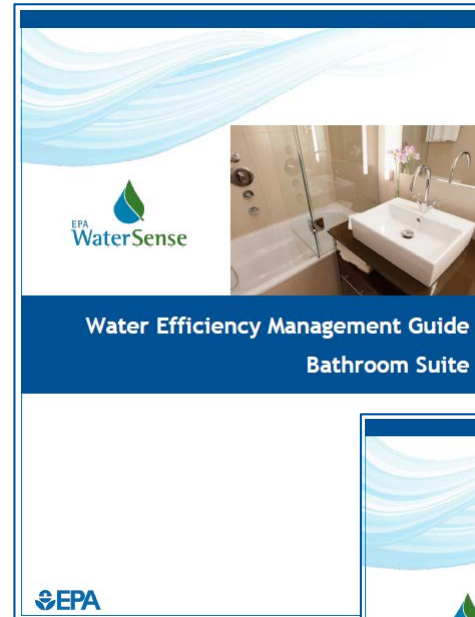
Multifamily Guides

Water efficiency management guides focused on multifamily buildings cover:

- Bathrooms
- Residential kitchens and laundries
- Outdoor Water Use
- Mechanical systems

Multifamily Water Assessment Tool – (coming soon)

<https://www.epa.gov/watersense/water-score-multifamily-housing>



Outdoor Water Resources

- WaterSense Water-Smart Landscaping Guide
<https://www.epa.gov/sites/production/files/2017-01/documents/ws-outdoor-water-efficient-landscaping.pdf>
- Regionally-appropriate Plant Lists – What to plant and where <https://www.epa.gov/watersense/what-plant>
- Micro-irrigation – drip irrigation guides
<https://www.epa.gov/watersense/watering-tips#smarter-tech>
- Expert assistance with irrigation system design, install, audit: Directory of Certified Irrigation Professionals
<https://www.epa.gov/watersense/irrigation-pro>



NEW

Water Reuse Guides

- **William J. Worthen Foundation - Water Reuse Practice Guide**
 - <https://www.collaborativedesign.org/water-reuse-practice-guide/>
 - Onsite non-potable reuse guide – covers all aspects of planning, technical details, along with permitting and communications
- **EPA Office of Water –**
<https://www.epa.gov/ground-water-and-drinking-water/potable-water-reuse-and-drinking-water>
 - **2017 Potable Reuse Compendium**
 - 2012 Guide for Water Reuse – indirect potable, non-potable



Water Wednesdays

look for



2018 webinars are held on Wednesdays at 1:00 pm EDT.
Register at energystar.gov/buildings/training

Make a Splash with Quick Water Wins	June 13th
Beat the Peak – Using Water Wisely for Commercial Outdoor Spaces	July 11th
Saving Water in Restrooms with WaterSense	Sept 19th
Minimizing Water Use in Mechanical/HVAC Systems	Oct 17th
EPA's 1-100 Water Score for Multifamily Buildings – What's My Score and How Do I Improve It?	Nov 14th
Every Drop Counts - Assessing and Evaluating Water Efficiency in Capital Improvement Projects	Dec 12th



Contact Us

look for



WaterSense

www.epa.gov/watersense

www.facebook.com/epawatersense

www.twitter.com/epawatersense

Email: watersense@epa.gov

Helpline: (866) WTR-SENS (987-7367)



Tara O'Hare
ohare.tara@epa.gov
202-564-8836



Additional Resources

City of Boulder Commercial, Industrial, and Institutional (CII) Water Assessment Tool and User's Guide – based on WaterSense at Work

<http://www.brendlegroup.com/water/cii-water-assessment-tool>

South Florida Water Management District *Water Efficiency and Self-Conducted Water Audits at Commercial and Institutional Facilities Guide*

<https://www.sfwmd.gov/documents-by-tag/waterefficiency>

Environmental Defense Fund, AT&T, & GEMI

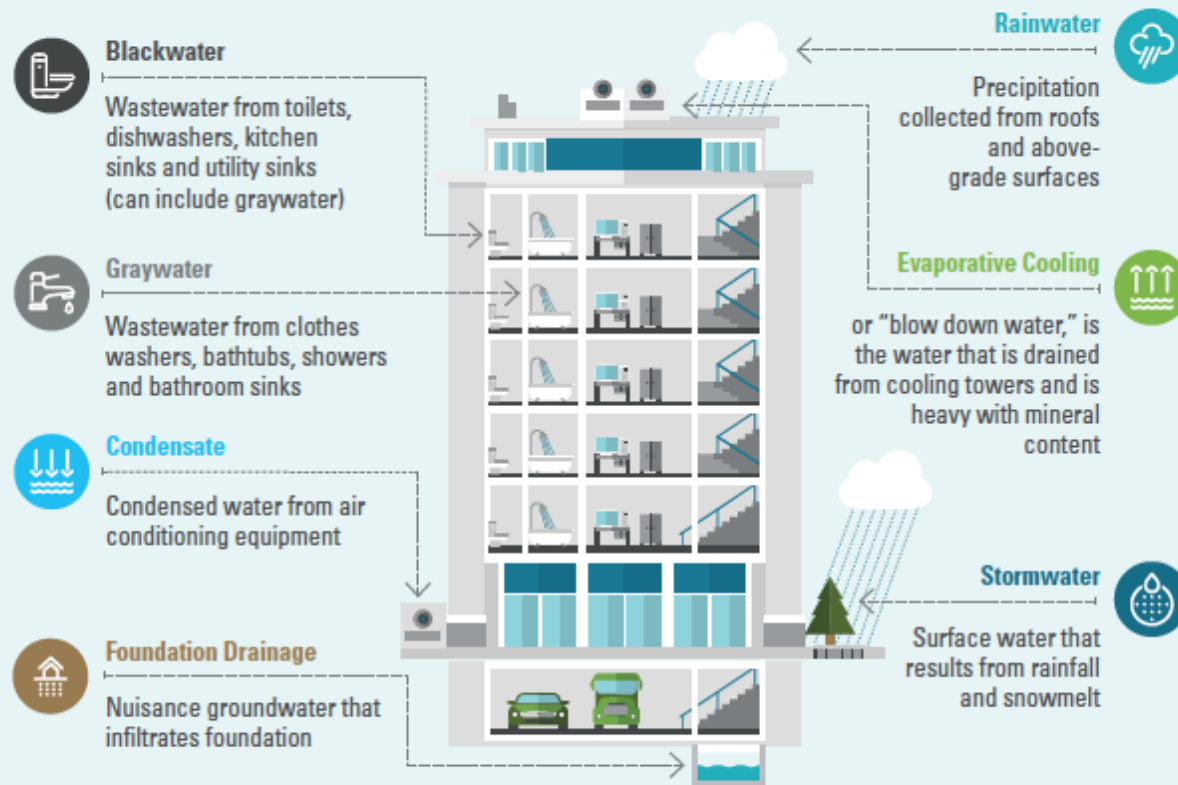
Cooling Towers - Toolkit with Scorecard and WaterMAPP Tool

<http://business.edf.org/projects/featured/water-efficiency-and-att/water-efficiency-toolkit-2>

Water Reuse Practice Guide

<https://www.collaborativedesign.org/water-reuse-practice-guide/>

ALTERNATIVE WATER SOURCES



This diagram shows the main alternative water sources available in a typical urban building.